

# Antelope Valley Woodturners Association



January 2011

Newsletter

Volume 10 Issue 6

Newsletter of the Antelope Valley Woodturners' Association  
2535 E. Ave. R-3, Palmdale, CA. 93550  
Member of the American Association of Woodturners

President	Bob Clark	661-947-7448
Vice President & Membership	Martin Littleton	661-944-4365
Treasurer	Mickey Burns	661-948-3261
Newsletter Editor & Secretary	Dan Yost	661-948-9347
Special Events	Charley Williams	661-942-8105
Webmaster	Dan Oliphant	661-274-1944

---

The next AVWA meeting will be at Dan Oliphant's shop March 19<sup>th</sup> 2011 from 09:00 A.M. to Noon

## President's Message

By Bob Clark

### Welcome

AVWA members enjoyed another interesting meeting with show-and-tell, raffle, and demonstration at our January 15<sup>th</sup> 2011 gathering. Four new members joined the AVWA. New members are; Carol Little, Jarrett Sadowsky, Erika Kendra, and Kate Klenke. Welcome, we hope you have an enjoyable and long association with the AVWA.

### January Meeting

We had a good turnout with twenty six attendees at our January meeting. Mickey Burns gave an interesting demonstration on the safe use and maintenance of holding devices including centers, faceplates, and chucks. Mickey demonstrated how to disassemble, clean, lubricate, and reassemble a chuck. With proper care your holding devices will work properly and last for years. Thanks Mickey.

### The After Party Training Session

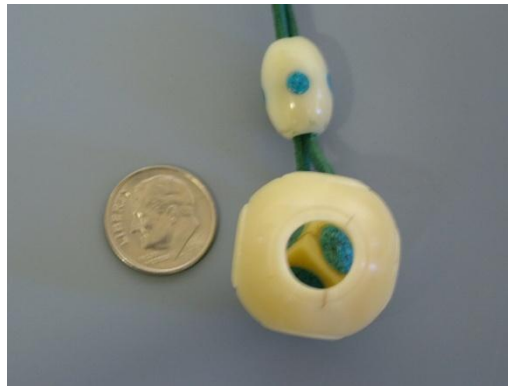
At our first After Party Training Session I had the pleasure of demonstrating spindle turning for 6 of our newer members. We worked on making an egg. Since an egg is just two half beads I demonstrated making the beads using various tools. We then moved on to texturing and coloring the eggs. I hope the members who stayed for the training session had as much fun as I did.

## Challenges

Our January challenge was to see what our members could make from a Tagua nut. The Tagua nut challenge was a tough challenge but many new members participated.



The winner was Martin Littleton with his beautiful necklace pendant. Martin was awarded a gift certificate from The Woodturners Catalog and the much coveted Choice Woods coffee mug. Good job Martin.



The challenge for March is to turn an Easter Egg. To make the challenge more interesting for March we will have 2 categories:

Category One: An egg made from a single piece of wood (not plywood or colorwood) that fits into standard egg carton. The egg may be colored and/or textured.

Category Two: An egg with unlimited design opportunities. It may be large, segmented, etc. Perhaps an Easter Bunny could live inside your egg, use your imagination.

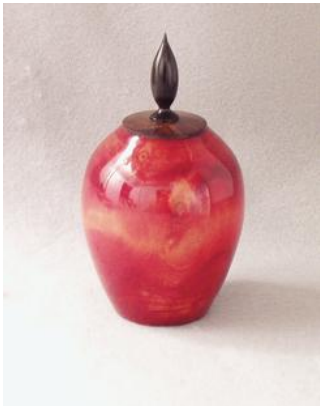


Congratulations to Dan Oliphant for having the winning club entry for the AAW chapter challenge. Dan's entry, a buckeye hollow form, will be featured at the June, 2011 AAW Symposium in St. Paul, MN. Beautiful work Dan.



### **March 19<sup>th</sup> Meeting (Bring your own chair please)**

The next meeting will be a real treat, one you don't want to miss. The meeting will be hosted by Dan Oliphant. Dan will be demonstrating colorization of turned items. The colored turnings on this page are examples of Dan's work. Dan has published a paper on how to apply stains to wood. The paper (instructions) can be found on the AVWA webpage at <http://avwoodturners.org/alcoholdye/pdf>



We will be meeting at Dan's home; 1234 Garnet Ave. Palmdale, CA, March 19<sup>th</sup>. Directions: From 20<sup>th</sup> St. East; turn west onto Ave. R-12 which turns into Spring Line Dr. Turn left onto Lasker Ave., then right onto Garnet. Dan's House is last house on left. A good route for members coming from either the north or south is to use Hwy. 14 (freeway) and exit onto Ave. S to the east, then left onto 20<sup>th</sup> St. East to R-12.

### **IRS Tax Exempt Filing**

The AVWA tax exempt filing with the IRS is progressing nicely. The IRS has asked for additional information to which we have responded. Hopefully, the IRS will make a determination on our application soon.

### **March After Party**

The January After Party, our first, was a success. To continue this program, the March After Party will feature Dan Oliphant who plans on demonstrating tool sharpening. Dan will demonstrate the use of the Oneway Wolverine Sharpening system. Free-hand sharpening will also be covered. Knowing how to sharpen woodturning tools is a very important skill that every woodturner needs to develop. Bring your tools for some hands-on learning.

### **March Display at the Lancaster Public Library**

The AVWA's annual display at the L.A. County Library will be from 1 to 31 March. Mickey Burns and Dan Yost will be in contact with the library and AVWA members to promote this project. This display is an excellent

opportunity for members to display their turned items. In the past the library staff has commented positively on our displays and the public interest they generate.

### **Lancaster Museum Demonstration**

The director of the Lancaster Museum requested the AVWA to provide a 2 hour demonstration on January 22<sup>nd</sup>. Martin Littleton demonstrated how to turn a natural edge bowl and Dan Yost turned a goblet with a captured ring. The demonstrations were well accepted with numerous questions from an interested group in attendance. Charlie Williams and Bob Clark assisted in answering questions and keeping the group informed on what was happening. The museum staff was pleased with the results of the demonstration.

### **Mentoring Program**

Corky Lunceford is developing a mentoring program for members that are new to woodturning or for members that want to improve their skills. The proposal discussed was to have a scheduled training session during the months that the AVWA does not have formal meetings. More information on this program will be presented as the program develops.

### **California Poppy Festival, 16-17 April**



The Poppy Festival is our biggest event of the year. It is two days when we meet the public, do demonstrations, and of course, sell items, and in general have a good time. Now is not too early to start turning items for the festival.

### **AVWA Logo Hats and Shirts**

Corky Lunceford has successfully found a local company that will produce hats, T-shirts, and pullovers with the AVWA logo. There is a minimum numbers of items required to be ordered plus an up-front cost in order for the company to produce our logo. Corky has not received the number of orders to meet the minimum. So, AVWA members, please get your orders in for these items in order for Corky to send in an order. Contact Corky at 661-821-5503 or email at [d.lunceford@sbcglobal.net](mailto:d.lunceford@sbcglobal.net) to place your order.

Keep turning

Bob

## Safety Information

### AVWA Lathe Guard

As the AVWA has increased in membership more demonstrators have been added to our pool of demonstrators and more requests have been made for demonstrators to support community needs. This has caused the AVWA to give crowd and observer safety more consideration. Additionally we have been asked to contain the wood chips from turning activities as much as possible.



The guard pictured is a collaboration of Dan Yost, Martin Littleton and Mickey Burns. The intent was to design a guard that would work with bench mounted as well as free standing lathes and yet be portable. The screen used was a trade-off between a screen that would not be intrusive to the observer while at the same time catching the larger wood chips and wood lost from the lathe if that should unfortunately happen. The height of the guard either when bench mounted or free standing is adjustable to accommodate the height of turners from just over 5' to over 6'4' tall.

Please keep the AAW warning about Lathe Safety in mind at all times.

**Show and Tell**



**Charlie William's Walnut Bowl**



**Corky Lunceford's Buckeye Bowl**



**Corky's Metal Man**



**Damon Dirks Pedestal Box**



**Damon's Maple Tower**



**Damon's Dyed, metalized sphere**



**Damon's Wood Hat With Feathers**



**Damon's Bowl Art (2)**



**Dan O's Buckeye Vessel**



**Robert De Harrold's Manzanita Bowls**



**Martin Littleton's Dyed Maple Flowers**



**Martin's Dyed Maple Orb**



**Martin's Orb Opened**



**Martin's Mullberry Burl Hollow Forms  
With Copper Inserts**



**Mike Holowach's Oak Bowl**

**Unknown Turner Projects From Show & Tell  
(All Teriffic pieces)**



**Wonderful Use of Grain**



**Natural Edge Bowl (Maple?)**



**Knockout Lidded Box**



**Real Nice Spalted Birch Lidded Box**





**Buckeye Bowl**



**Natural Edge Walnut Bowl**



**Terrific Mushrooms**



**Walnut and Turquoise Bowl**